

Footbridge Design Competition – Constance (1/2)

Location	Constance, Germany
Client	City Constance
Date	2007
Services	Design



Description

The connection of two suburbs by means of a foot- and cycle bridge across a busy railway station was the topic of this competition. Also included in the competition brief was the design of the square adjacent to the railway area. In the present proposal the connection was achieved through the specific structure of the bridge and the particular lighting of the bridge and the square. The design of the square was governed by a pool situated next to the ramp leading up to the bridge which also includes space for a cafe or similar usage.



View to Gustav-Schwab-Street direction west

Footbridge Design Competition – Constance (2/2)



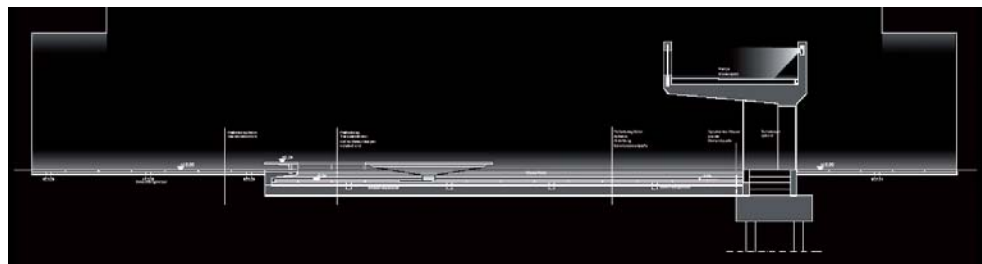
View to Gustav-Schwab-Street direction East



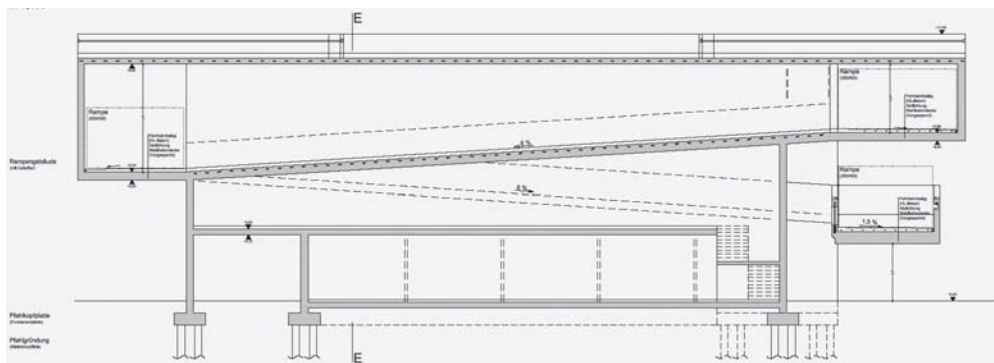
Plan of site



Illumination concept of Brückenplatz



Cut Brückenplatz



Cut Rampengebäude