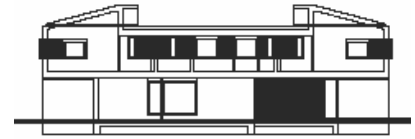


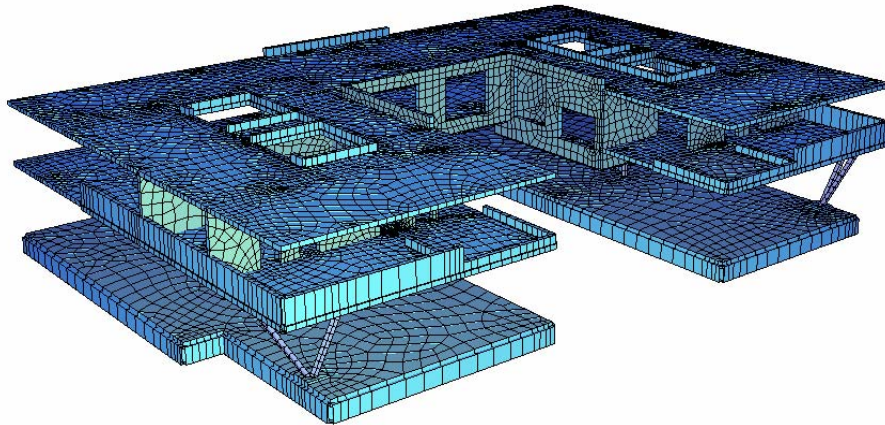
Home for young people Welzenegg

Location	Klagenfurt, Austria
Client	Deaconry Carinthia
Date	2006
Services	Detailed structural design and construction supervision.

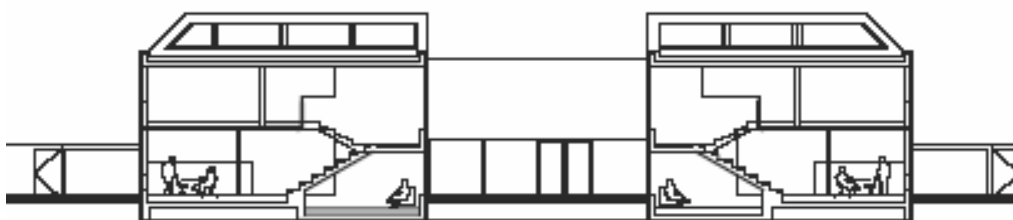


Description

The implementation of this new building created high demands with regards to social and economical issues. A structural concept characterized by a mixture of light-weight and concrete elements was developed to guarantee the desired atmosphere and to fulfill the architect's intentions.



3D FE-Model



Longitudinal cut through the two side wings of the building



Aspect



Transversal cut