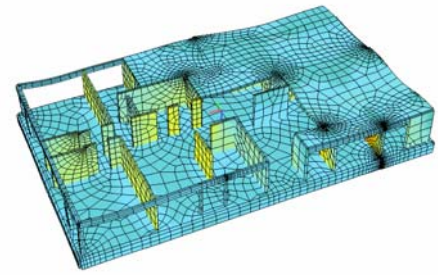
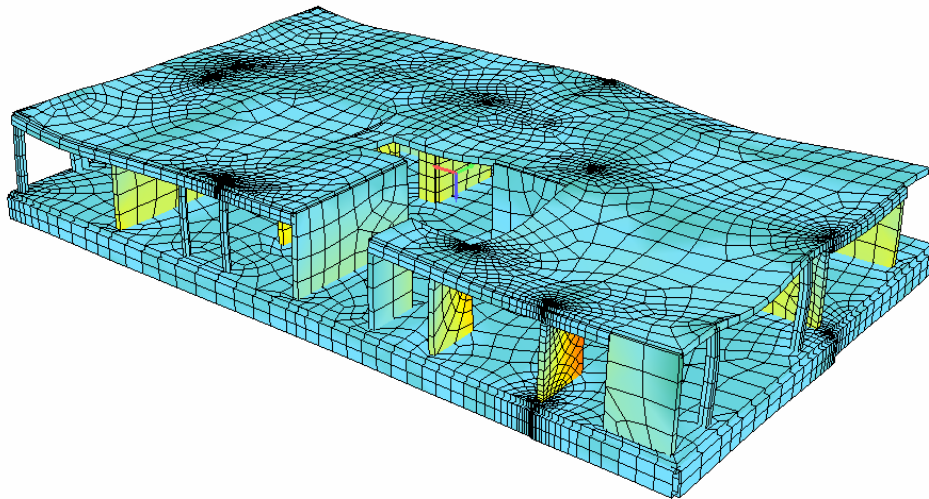


Location	<b>Wolfsberg, Austria</b>
Client	pro mente Carinthia
Date	2007
Services	Structural and construction supervision

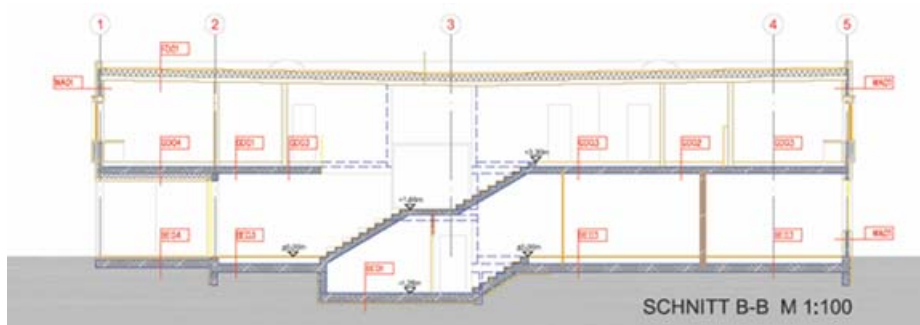


Description

The implementation of this new building created high demands with regards to social and economical issues. A structural concept characterized by a mixture of light-weight and concrete elements was developed to guarantee the desired atmosphere and to fulfill the architect's intentions.



3D FE-Model



Sectional view



View

View