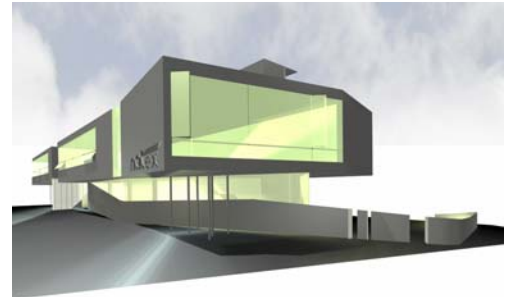
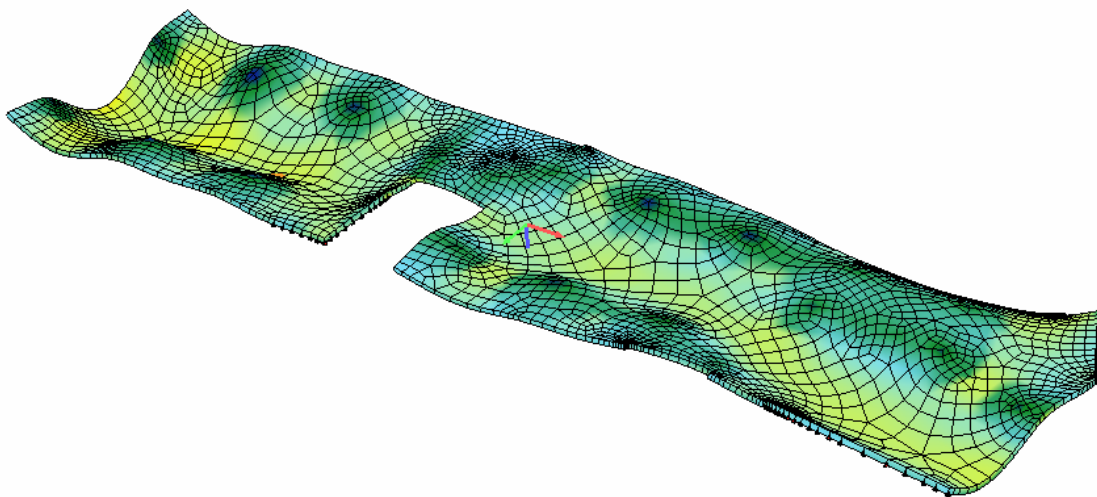


Location	Niederösterreich, Austria
Client	NATEX Prozesstechnologie GesmbH, Ternitz
Date	2006
Services	Detailed structural design and construction supervision



Description

This office block represents a considerable challenge for a structural designer due to the seemingly floating upper level of this building. A column grid in combination with a concrete slab forms the skeleton of this structure which was optimized using advanced finite elements analyses. Design checks were performed according to OeNorm B4700.



Displacements and stresses in slab over ground floor



Visualisation