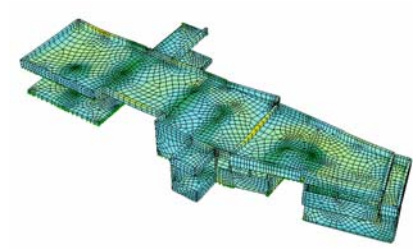


Schmidt's Residence

Location	Graz, Austria
Client	Schmidt Family
Date	2006 / 2007
Services	Structural and construction supervision

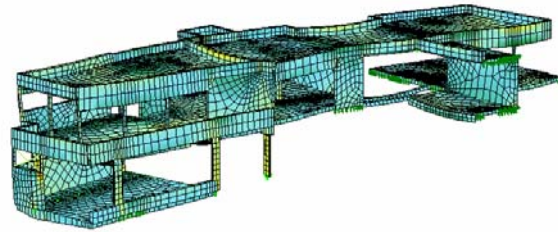


Description

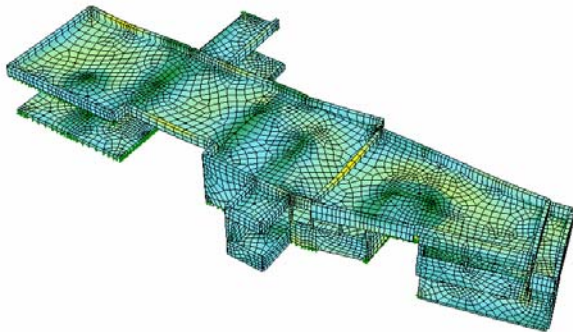
This architecturally challenging building is presented with ample open space on the first and second floor. The cast on-site concrete slabs are supported by edge beams which transfer the weight to slender and barely visible steel columns. The dimensions of the slabs, carriers and stilts were optimized by a 3D-FE calculation. Design and reinforcement checks were performed according to the Austrian Code Ö-Norm B4700.



3-D Visualisation (Purpur architects)



3-D Model



3-D Model



3-D Visualisation (Purpur architects)

