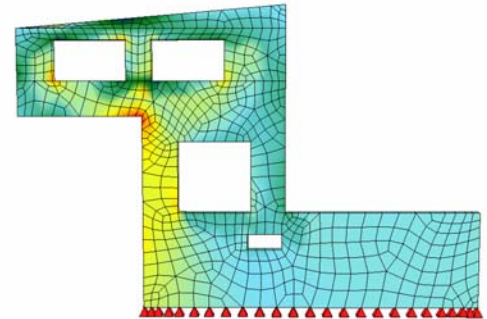


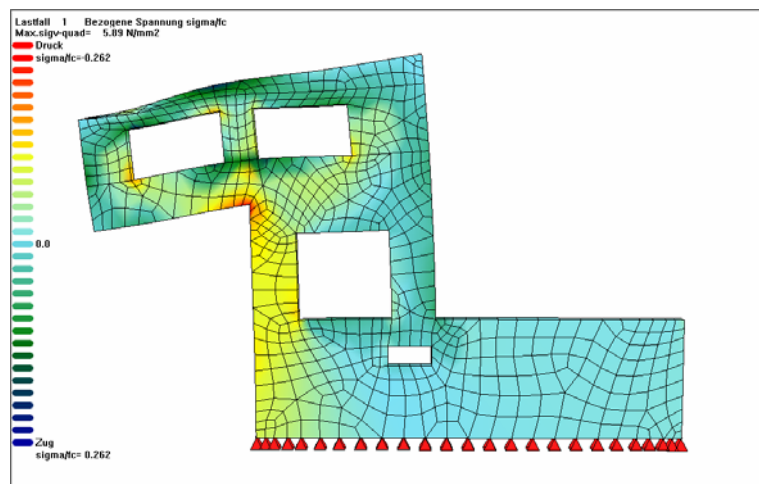
Haus Höbel

Location	Dobl, Austria
Client	Kulmer Bau GesmbH & Co KG
Date	01/2006
Services	Structural analysis and detailed construction design

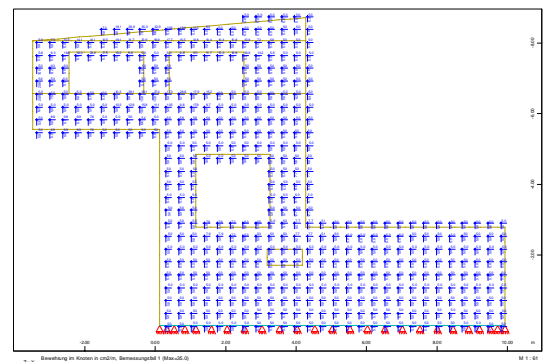
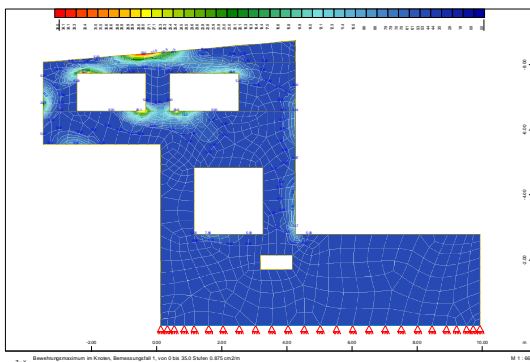


Description

A cantilevered upper floor characterises the unusual architecture of this building. The two concrete side walls are the supporting elements which must transfer all the internal forces. The dimensions of these walls were optimised using Finite Elements Analysis. The design of the structure was performed according to Austrian code specifications OeNorm 4700.



Displacements load case self weight



Reinforcement – Isolines and steel areas in the reinforcement directions.