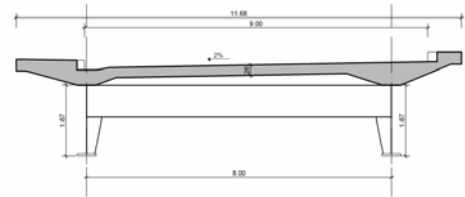


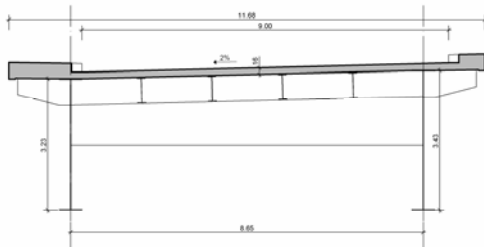
## Bridge of the River Mur, Frohnleiten

Location	<b>Frohnleiten, Austria</b>
Client	ASFINAG – Autobahn Service GmbH South
Date	2006
Services	Preliminary inspection of feasibility of widening the bridge.

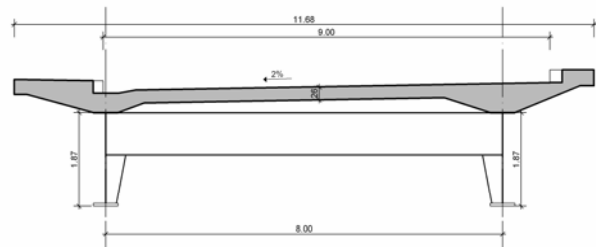


**Description**

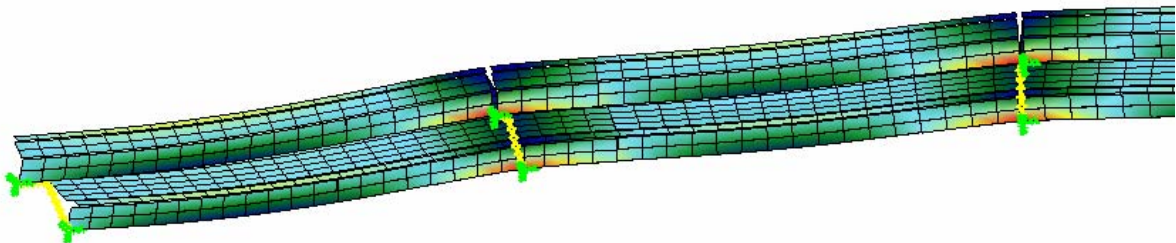
The deck of this bridge is being widened from 9.00 metres to 12.50 metres in order to increase traffic safety by adding another lane. A study was performed to evaluate the current status of this bridge and to compare various options for the widening.



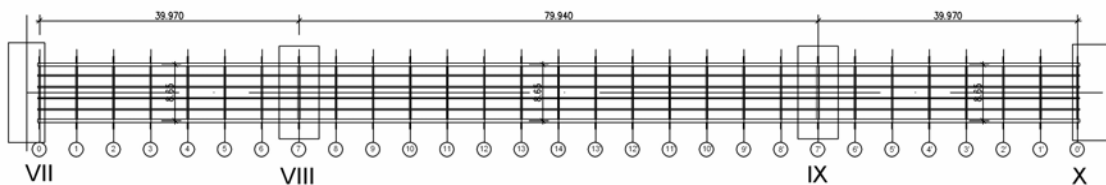
Standard cross-section bridge



Standard cross-section aerial railway



Load distribution and deformation in the 1<sup>st</sup> and 2<sup>nd</sup> field of the aerial railway



Plan view of bridge